

FIGURES

Corynebacterium diphtheriae



Corynebacterium pseudodiphtheriticum



Enterococcus spp.



Escherichia coli - DCA agar



Escherichia coli - ENDO agar



Haemophilus influenzae



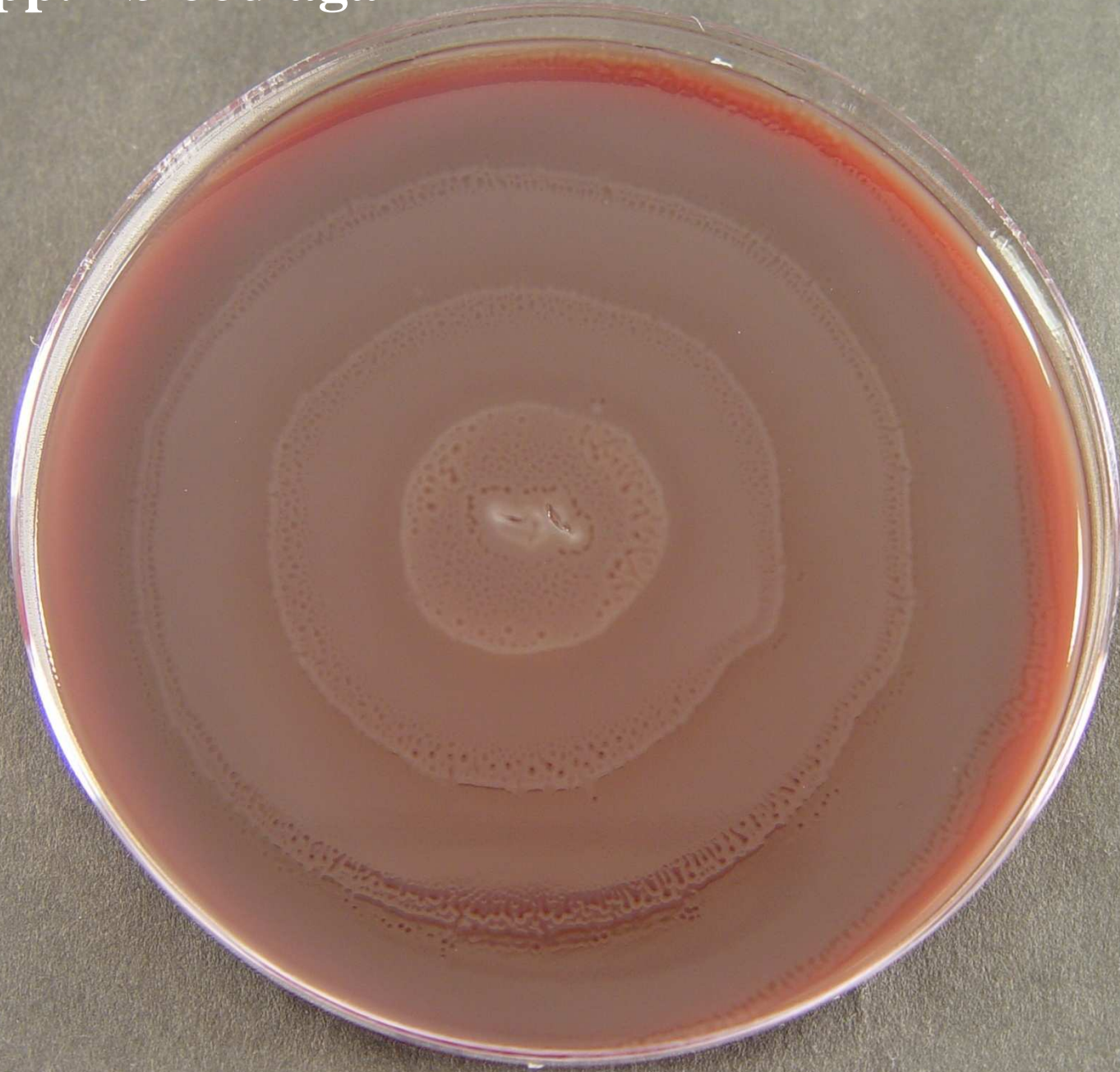
Neisseria lactamica



Neisseria meningitidis



Proteus spp. -blood agar



Proteus spp. - ENDO agar



Pseudomonas aeruginosa – MH agar



Salmonella spp. - DCA agar



Salmonella spp. - ENDO agar



Staphylococcus aureus



Staphylococcus epidermidis (coagulase-negative)



Streptococcus pneumoniae



Streptococcus pyogenes



viridans streptococci



yeasts

